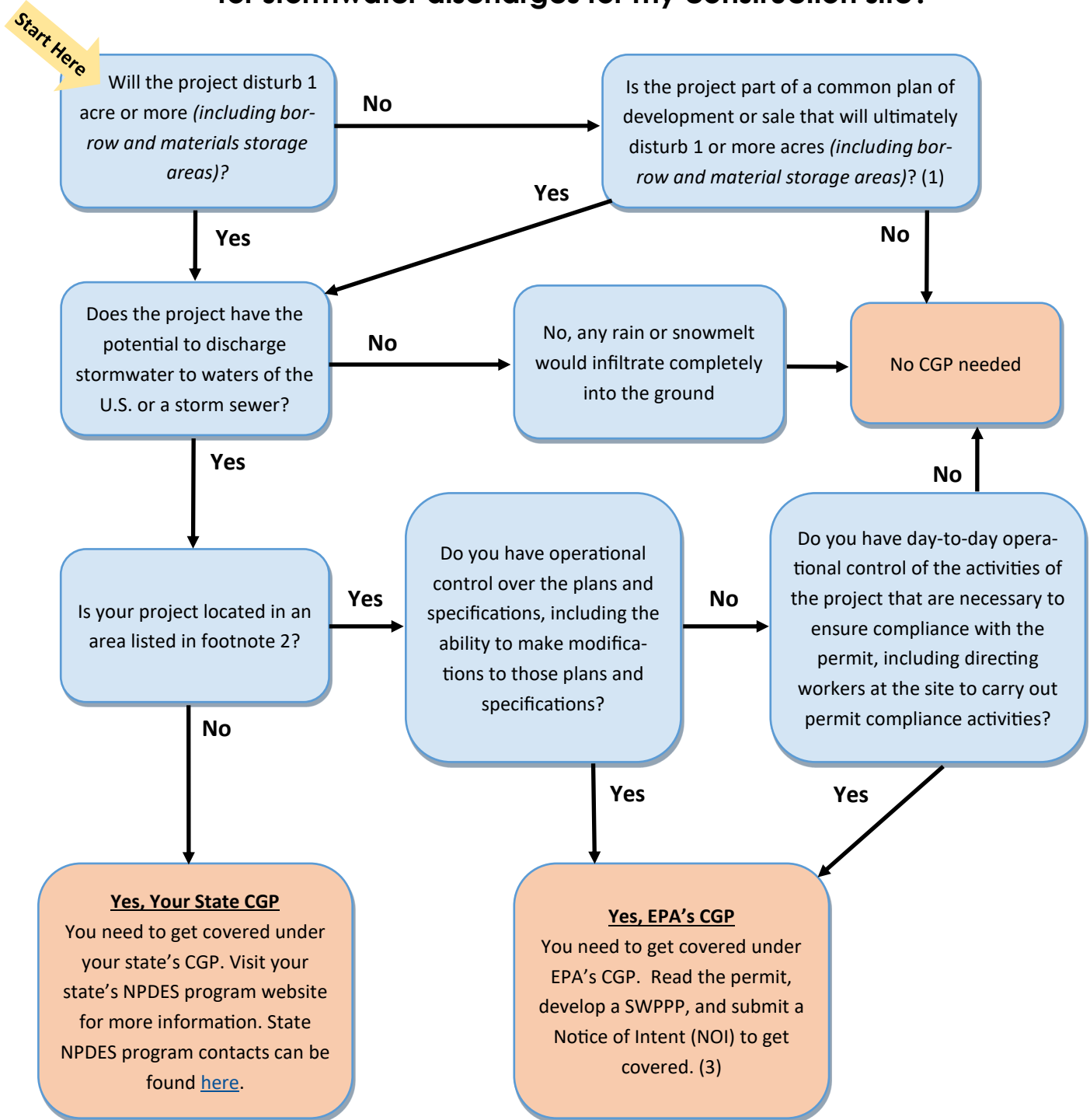


Do I need to get covered under an NPDES Construction General Permit (CGP) for stormwater discharges for my construction site?



Need assistance? Contact Us - We're your partners in protecting clean water!

EPA Headquarters: [Emily Halter](mailto:halter.emily@epa.gov) (halter.emily@epa.gov) (202) 564-3324

[EPA Regional Offices contacts](#)

[State NPDES program contacts](#)